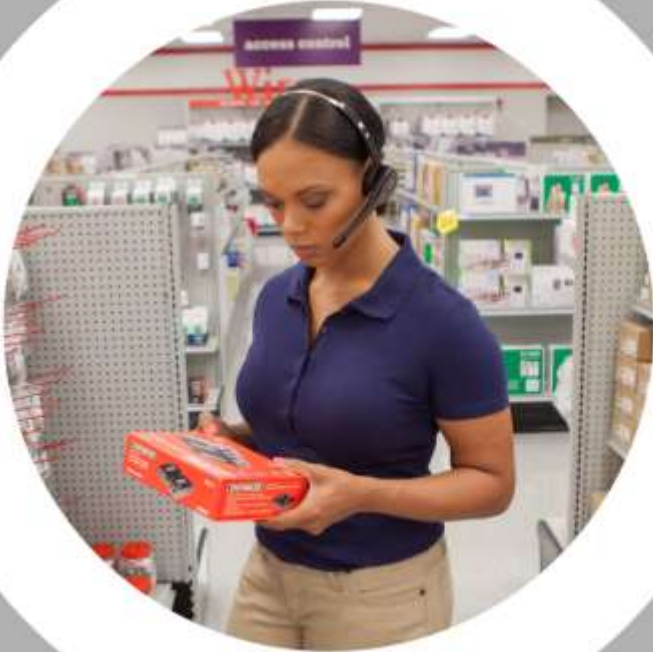




# **GROW** 2018

Partner Conference





Simon, Lim  
SP&S PP

## 2018 HONEYWELL NPI PDA EDA51

2018-Nov



**HONEYWELL MOBILITY NPI**

**Honeywell**  
THE POWER OF **CONNECTED**



# Legacy Handheld OS 지원종료

출시된 제품 ↓	수명 주기 시작 날짜	일반 지원 종료 날짜	연장 지원 종료 날짜	서비스 팩 지원 종료 날짜	메모
Windows Embedded CE 6.0	2006-11-30	2013-04-09	2018-04-10		
Windows Embedded Compact 7	2011-03-15	2016-04-12	2021-04-13		
Windows Embedded Handheld 6.5	2010-12-17	2015-01-13	2020-01-14		

\* 출처 : Microsoft 홈페이지

# Microsoft는 더이상 Mobile OS에 'Focus' 하지 않습니다



Microsoft appears to have abandoned its smartphone operating system ambitions.

본문내용 :

Microsoft는 그들의 스마트폰 OS 관심을 포기하였습니다. 회사의 Windows 10 수장은 자신의 트위터에 Windows 10의 모바일버전에 대한 새로운 기능과 하드웨어는 더이상 "Focus" 하지 않는다고 올렸습니다.

Joe Belifore는 그자신도 윈도우10 모바일에서 안드로이드로 바꾸었다고 추가설명하였습니다.

Windows 10 Mobile은 PC 버전과 모바일버전에 동시에 통합된 범용앱을 사용할 수 있도록 추진하였으나 이러한 컨셉은 실패하였습니다.

(줄임)

\* 출처 : BBC News

# 2018 Mobility Roadmap

Mobility Edge Platform



SERIES

Entry Level	Enterprise	Value	Performance
-------------	------------	-------	-------------

**EDA51 – Q4**

- 5.0" display
- Lower durability
- 4' drop spec
- Thin
- Light
- 13MP camera
- Limited LTE

**EDA60K – Q2**

**Warehouse**

- 4.0" Display
- Numeric 30-key keyboard
- Scanning: **1D laser** /2D imager
- Extended battery

**CT40 – Q3**

**Retail**

- 5.0" display
- Lower durability
- 4' drop spec
- **Thinnest**
- **Lightest**
- 13MP camera

**CT60 – Q1**

**DSD, Delivery**

- 4.7" HD display
- High durability in the smallest package
- 6' drop spec
- Ergonomic side buttons
- 13MP camera

**CN80 – Q2**

**WHS, Mfg, T&L**

- 4.3" display
- 8' drop spec
- **Cold Storage**
- **Long Range Scanning**
- 2x2 Wi-Fi
- ZigBee support
- Find my Device
- 13MP camera

**VM1A – Q4**

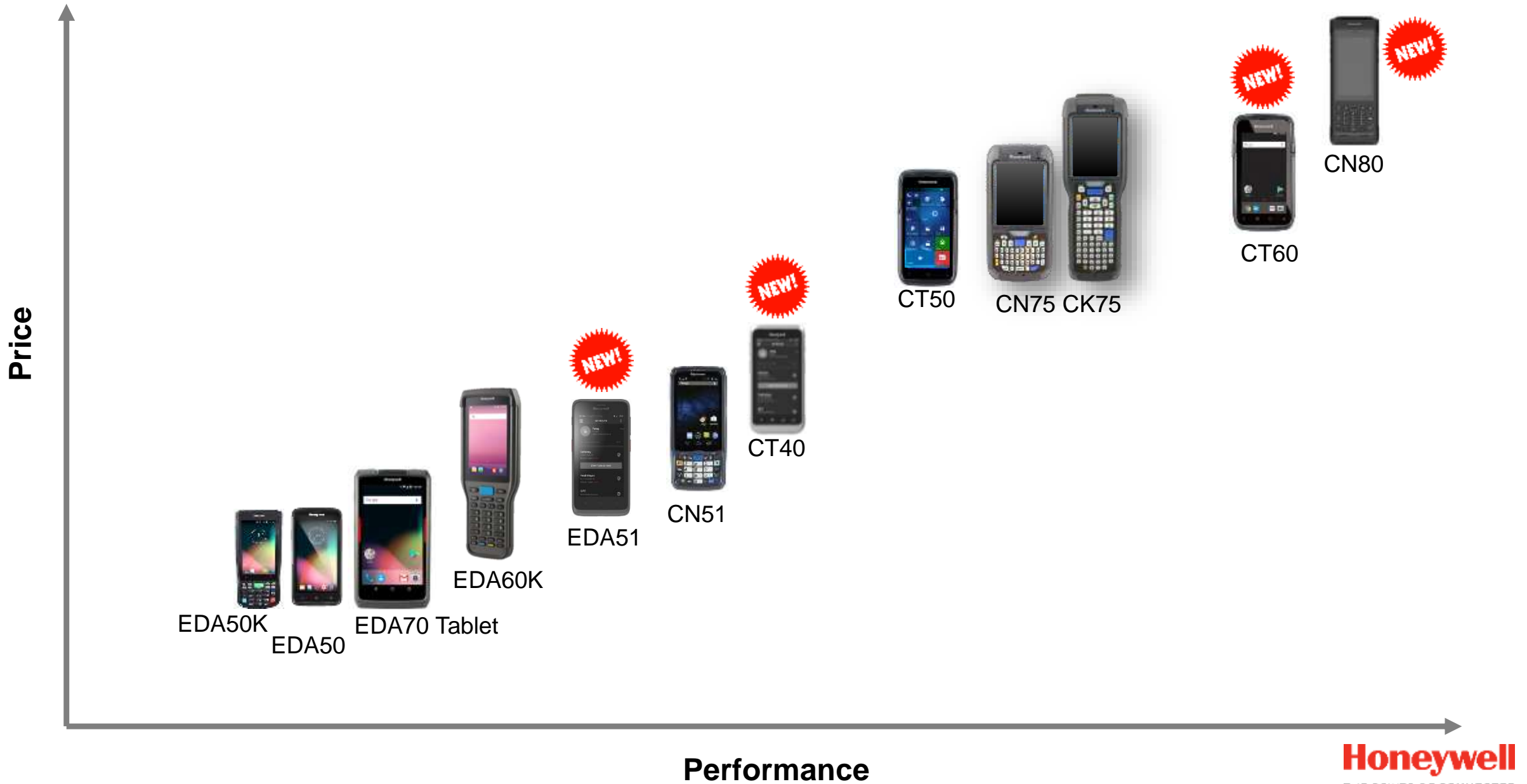
**Warehouse, Depots, Ports & Yards**

- VM1/CV41 refresh
- Mobility Edge platform
- Compatible with VM1 accessories
- Cold storage and outdoor options



THE POWER OF CONNECTED

# Mobility HHC Performance



# ScanPal EDA51 Specifications

## Architecture:

Qualcomm SDM450(1.8GHz \*8 )  
Android 8.x with **GMS/NO-GMS**  
2G RAM/16G ROM / **3G RAM/32G ROM(option)**  
Accessible micro SD card (Up to 32GB)

## Connectivity:

**WLAN:** EEE 802.11 a/b/g/n/ac radio  
**WWAN:**  
GSM&EDGE: Band2/Band3/ Band5/Band8/  
WCDMA: Band1 / Band2/Band4/  
Band5/Band8;  
CDMA: BC0 /BC1/BC6/BC10  
FDD-LTE: Band1/ Band2/ Band3/ Band4/  
Band5/ Band7/ Band8/ Band9/ Band13/  
Band20/ Band25/ Band26/ Band29;  
TDD-LTE: Band38/ Band39/ Band40/  
Band41**A-GPS**  
**Bluetooth Class 4.2**

## Data Capture:

6603 Imager/**3601 Imager (Oct, 2018)**  
Rear camera: 13MP with AF  
**NFC**  
OCR



## Software and sensing:

Demos  
G-sensor, proximity sensor  
Smart Sensors: Wake on motion, face down  
suspend

## Ergonomics and UI:

Display: 5" LCD 1280\*720 Capacitive multi-touch  
Outdoor display with Gorilla glass 3  
**Dimension:**  
**Weight:**  
Supports wet hand operation

## Durability:

IP64 sealing, 1.2m drop to concrete at room temp  
(**10C ~50C**).  
1000x 0.5 meter Tumbles at room temp.

## Power:

Lithium replaceable battery, 3.8V, 4000mah  
12 hours running time & 4 hours charging time

## I/O Interface:

**1 micro SD card slot**  
**1 micro USB 2.0 port, design life to 10,000 times**

## Maintenance:

1 year factory warranty  
Operating Temp: +14F to +122F /-10C to +50C  
Storage Temp: -4F to +148F /-20C to +60C  
Humidity: 10% to 90% (non-condensing)



# New developed accessory (TBD)



**Scan handle**



**PDA Only Base**



**Home base  
With Battery**



\* Single cradle, QBC and 4 bay charge base can compatible with EDA50's. (Engineering team still need to verify)

# ID (TBD)



Honeywell is building a smarter, safer,  
and more sustainable world

---

THAT'S THE POWER OF **CONNECTED**  
THAT'S THE POWER OF **HONEYWELL**

---

Connected Aircraft • Connected Automobile • Connected Home • Connected Building  
Connected Plant • Connected Supply Chain • Connected Worker

**Honeywell**

THE POWER OF **CONNECTED**